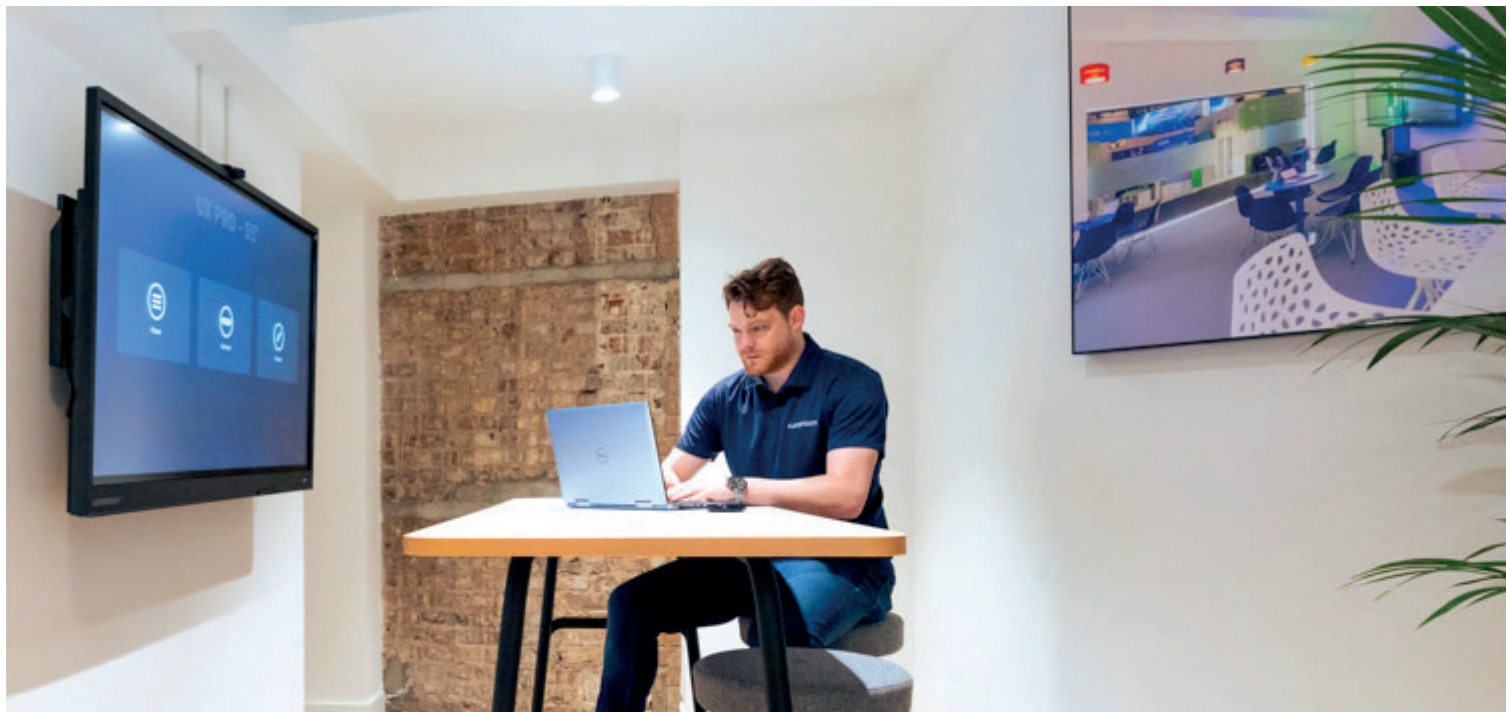




Connecting people with technology

UX Pro – Gen 2

#clevertouch | sales@it.ie



Embrace business-wide collaboration



Designed for hybrid meetings

UX Pro combines the power and security of an Intel OPS Windows 10 Pro PC, with a sleek design for one-touch UC and VC applications.

From the boardroom to the breakout area, the Clevertouch all-in-one Enterprise Ecosystem facilitates business-wide collaboration - empowering business leaders and staff to maximise their potential. Start a Video conference call with one click, Multi-host Zoom, Teams or any Video conference application at the same time.

Book your screen before a meeting and have videos or bespoke content play on your screen when it is not being used. Let Clevertouch transform your enterprise communications and workspaces into an integrated, seamless experience.

OPS i5 or i7 Intel PC

Array microphone

USB-C charging

Android/PC

Switch between Android and PC mode, or switch off the Android capabilities and just use the PC.

Security Matters

Advanced security and network options.

Stay Connected

Compatible with your preferred UC and VC applications

USB Camera

Works with any USB camera



Customise your home screen

When the screen powers on the home screen is completely customisable, so you can add your company branding, logos and news. You can choose the applications you see on launch, be it UC platforms such as Zoom or Teams, or collaborative workflow apps such as Trello or Miro. You can also sync with calendar apps so that the days meetings can be shown on screen.



Add any app or software

With an optional slot-in Windows 10 Pro Intel® Core™ i5/i7 PC, you can load your existing apps and software from your network, enabling you to collaborate securely across the globe, and access the same features as your colleagues, wherever they are based.



Networking and security


Our touchscreens are designed to integrate with your current system set up. With remote management tools, increased security and network options. Settings can be locked down to create completely secure connections.

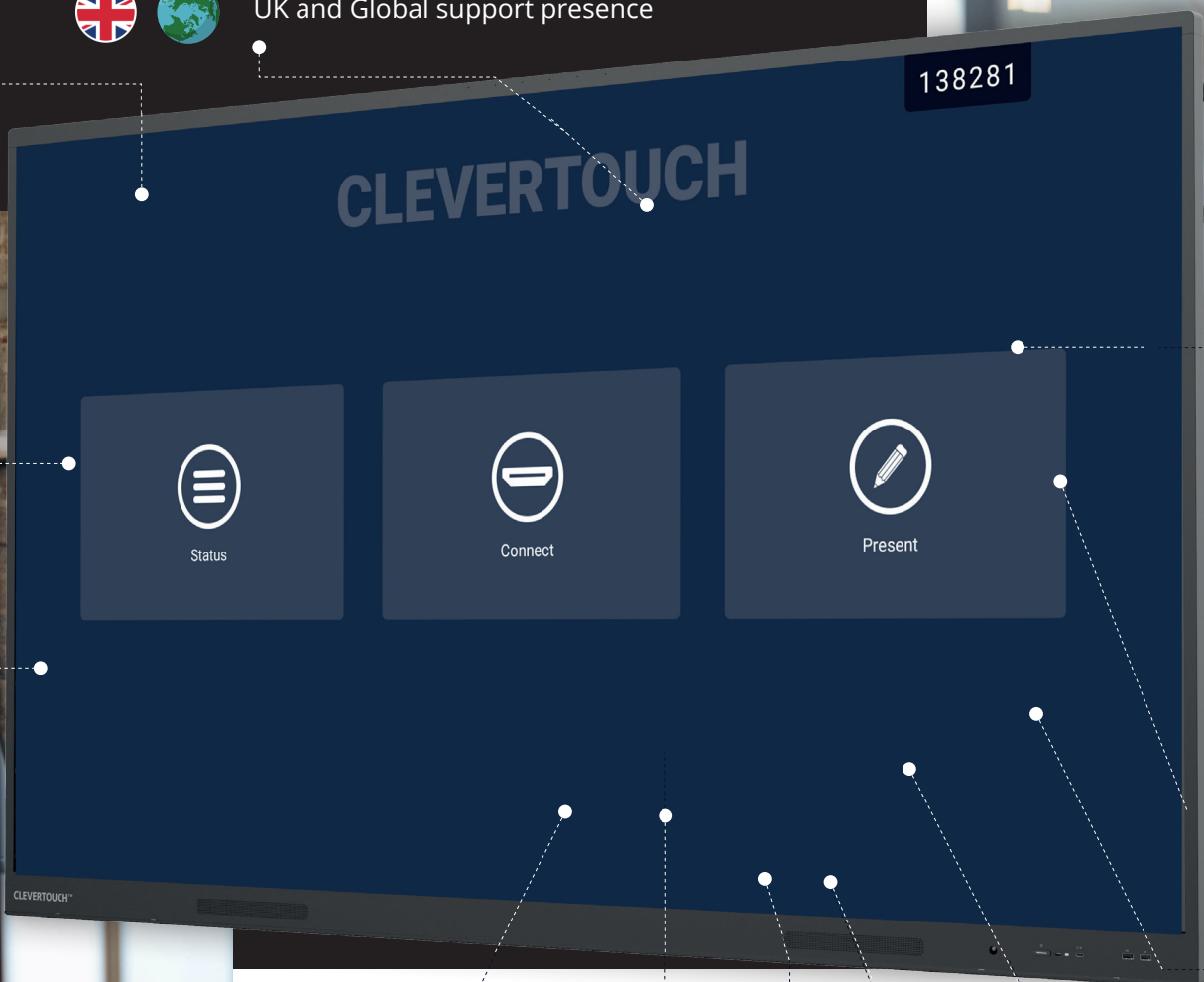


Screen mirroring


Any device can mirror content to the UX Pro Display. Whether meeting attendants come in with their phone, laptop or tablet, they can connect to UX Pro, without needing to plug in or download an app. Clevershare screen mirroring is compatible with Android, iOS, Windows and Chrome devices.


 UK and Global support presence

 5 year (re-install, de-install) warranty. At no additional cost to the end-user.



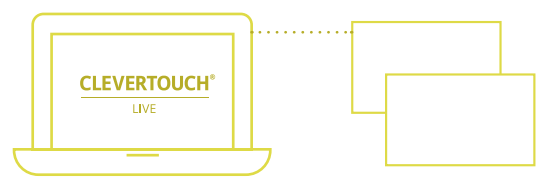
 Clevertouch onscreen touch technology is ours, not white labelled.

 Screens that can run with PC (Windows 10) as an operating system or Android, or even both when required.


 Easy Windows 10 environment that End users can manage using their existing MDM like Intune.



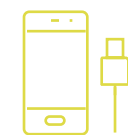
Screens that have in-built signage that can be activated at no additional cost and with no OPEX cost and managed remotely.



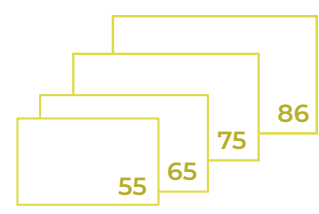
Link all your office displays; video walls, Non touch screens and touch screens together through ClevertouchLive, have them play the same or bespoke content.

 Free of charge screen recorder, perfect for practicing sessions outside of Teams or Zoom.

Sharing dongles and App are free of charge with UX Pro screens. The USB-C dongle is secure, not needing to go on a network or install anything on users devices. The dongle also has the benefit of working peer to peer.

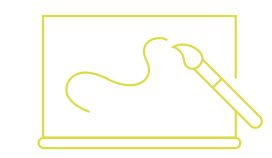
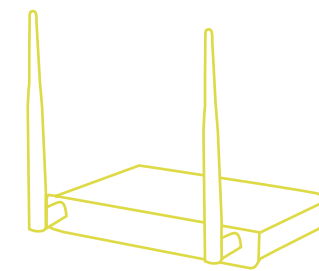
 Touch and Non-touch screens are agnostic so can easily work with external sharing devices.

UX Pro comes in four sizes. Each size has the same internal specification, so you can expect the same experience with any size screen.



Custom OPS (Optional Extra), with i5 8G RAM and i7 16G RAM as off the shelf PCs.

Users can build their own OPS where needed and just slot in, giving giving you the ultimate control over your display.



Clevertouch offers a whiteboard on PC that can be accessed ad hoc, no need to open up Teams or login to Microsoft whiteboard to access a whiteboard.

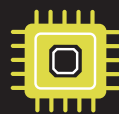
UX Pro – Gen 2 What's New?



Upgraded 6 array microphone



Zero bonding - no air gap gives greater accuracy, improved performance and vibrant imagery



Android 9 4K Chipset – 6GB RAM / 64GB ROM



Front-mounted latest-generation USB-C – allows switching between any device



Front-mounted USB-A port



Ambient light sensor



Front-facing speakers and subwoofer for clearer, more powerful quality audio



Front-mounted power button

CleverCam

CleverCam is a 4K ultra-high definition ePTZ camera with a sleek, eye-catching design. CleverCam employs advanced ISP processing algorithms to provide vivid, vibrant images with uniform clarity, brightness, strong colour layering, high resolutions and fantastic colour rendition. With it's great functionality and superior performance, CleverCam is easy and convenient to install and maintain.



Key Features

Ultra HD 4k Resolution | ePTZ | Video output interface

1/2.8 inch high quality CMOS sensor. Resolution is up to 4k with frame rate up to 30fps (MJPG) or 30fps (H.264); compatible with 1080P and 720P; ePTZ and 10x digital Zoom; Video output interface USB 3.0

Multiple Installations | Easy to use

Standard equipped with mold clamp. Easy to install on any device, such as LCD screen, laptop, table and tripod; no need to download driver; USB 3.0 Plug and play.

Wide Field of View

83°/100° wide angle and small distortion lens options; Supports H.264, MJPG, YUY2, NV12 video compression, to made video play smoothly.

Built-in MIC

Built-in two omni-directional MIC pickups; with unique noise suppression algorithm.

Auto Framing

CleverCam uses a face-detection algorithm to automatically centre the camera frame to the person talking, whilst still ensuring that the other people in the room are in-view.

Technical Specification

View Angle	92°(D) / 80°(H) / 45°(V)	SNR	>55dB
Focal Length	f=3.24mm	USB	
Iris	F2.1	Video Compression	YUY2, NV12, MJPG, H.264, H.265
Image Sensor	1/2.8 Inch High Quality 4K CMOS Sensor	Operation Systems	Windows 7 (1080P or lower), Windows 8.1, Windows 10; macOS™, 10.10 or higher, Linux (UVC support); Android
Effective Pixels	8.28MP, 16:9	USB Audio	Support
Video Output	USB3.0(Type B), audio video outputs LAN: 10M/100M/1000M adaptive Ethernet port,audio output supported (The default model without LAN)	USB Protocol	UVC, UAC
Video Compression	USB 3.0:YUV2, NV12, MJPG, H.264, H.265 LAN:H.264, H.265	PTZ Control	EPTZ
Audio Input	2 Micro omnidirectional pickups	Hardware Requests	2.4 GHz Intel® Core 2 Duo Processor or better, 2GB Capacity or more, USB 2.0 Input (USB3.0 for 4K)
Video Resolution	Main Stream: 3840×2160 @30fps, 1920×1080P @30fps / 25fps, 1280×720P @30fps / 25fps Sub Stream:1280×720P @30fps / 25fps, 640×480P @30fps / 25fps 320×172P@30fps / 25fps	Other Parameters	
Digital Zoom	10X	Working Voltage and Current	USB power supply 5V POE power supply 48V USB power supply 1A (max) POE power supply 0.104A (max)
Illumination	0.1Lux (F1.8, AGC ON)	Power Consumption	5W (max)
DNR	2D&3D DNR	Stored Temperature	-10°C ~ +60°C
Super Low Illumination	On/Off	Stored Humidity	20% ~ 95%
Focus	Auto / Manual / One Push	Working Temperature	-10°C ~ +50°C
White Balance	Auto / Manual / One Push//3000K/3500K/4000K/4500K/5000K/5500K/6000K/6500K/7000K	Working Humidity	20% ~ 80%
Exposure	Auto / Manual	Dimension (W*H*D)	180mm × 42.5mm × 46.3mm
Backlight Contrast	On/Off	Weight	Around 0.3kg
		Accessory	User Manual, Warranty card, USB3.0 cable, IR Controller



MIC

Built-in two omni-directional MIC pickups

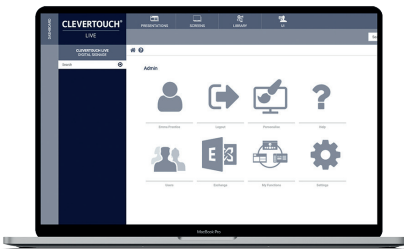
Sensor

1/2.8 inch high quality CMOS sensor

Audio/Visual

Multiple Audio/Visual Compression Standard





ClevertouchLive App
 No set up fee,
 No subscription,
 No extra costs



Flexible Messaging Solutions

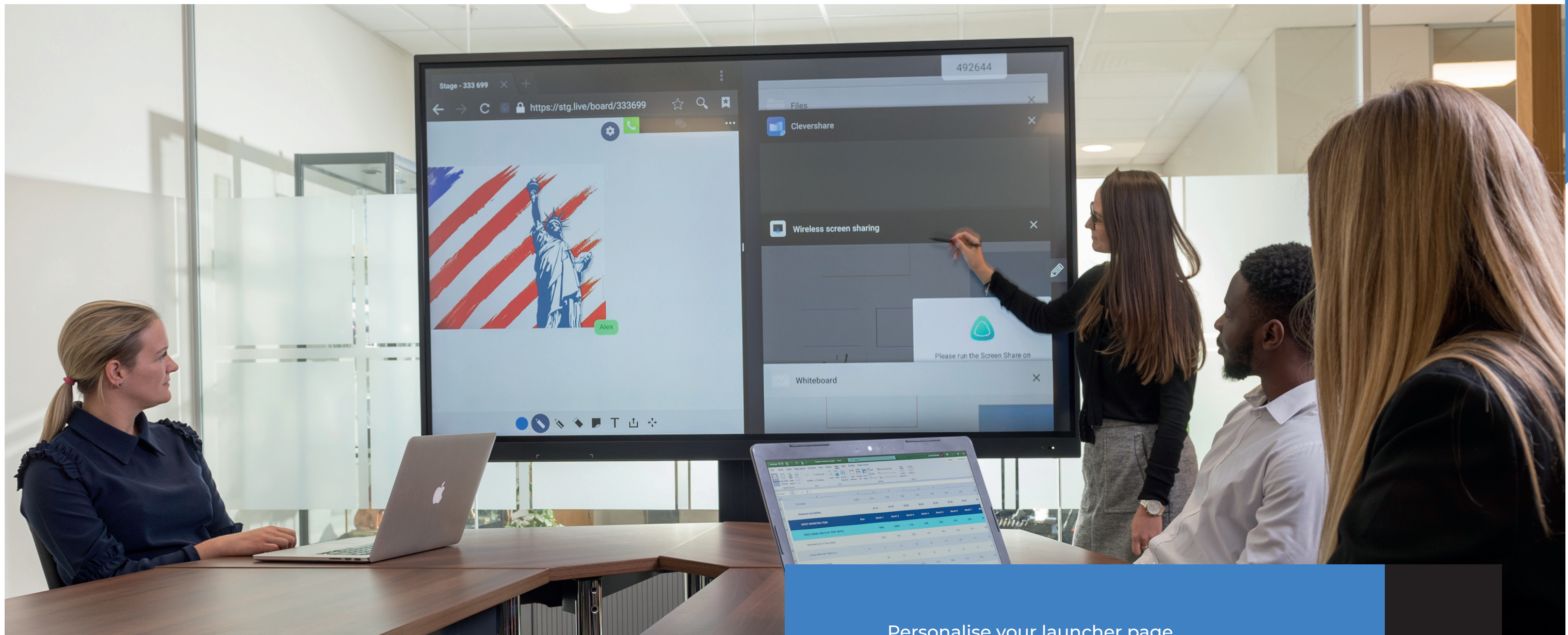
Exclusive to Clevertouch

ClevertouchLive App: Messaging

With ClevertouchLive App your UX Pro isn't just a screen for teaching or presenting, it's also a communications tool. Use it to broadcast messages, alerts and important information to staff and visitors.



- Daily news and activities
- Overviews of meeting room bookings
- Live video messages
- Emergency announcements and fire drills



Dynamic and integrated

ClevertouchLive: Home Screen

Customise your home screen so it's unique to your organisation. With the ClevertouchLive App, you can group screens so they are representative of your messaging and create user and group profiles.

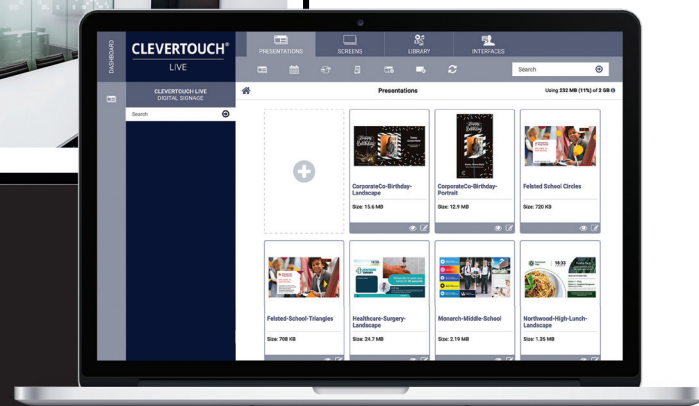
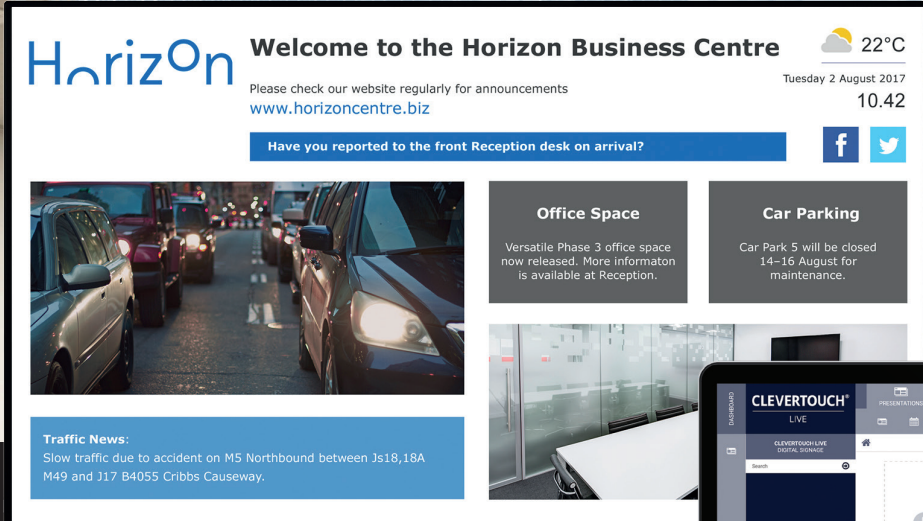
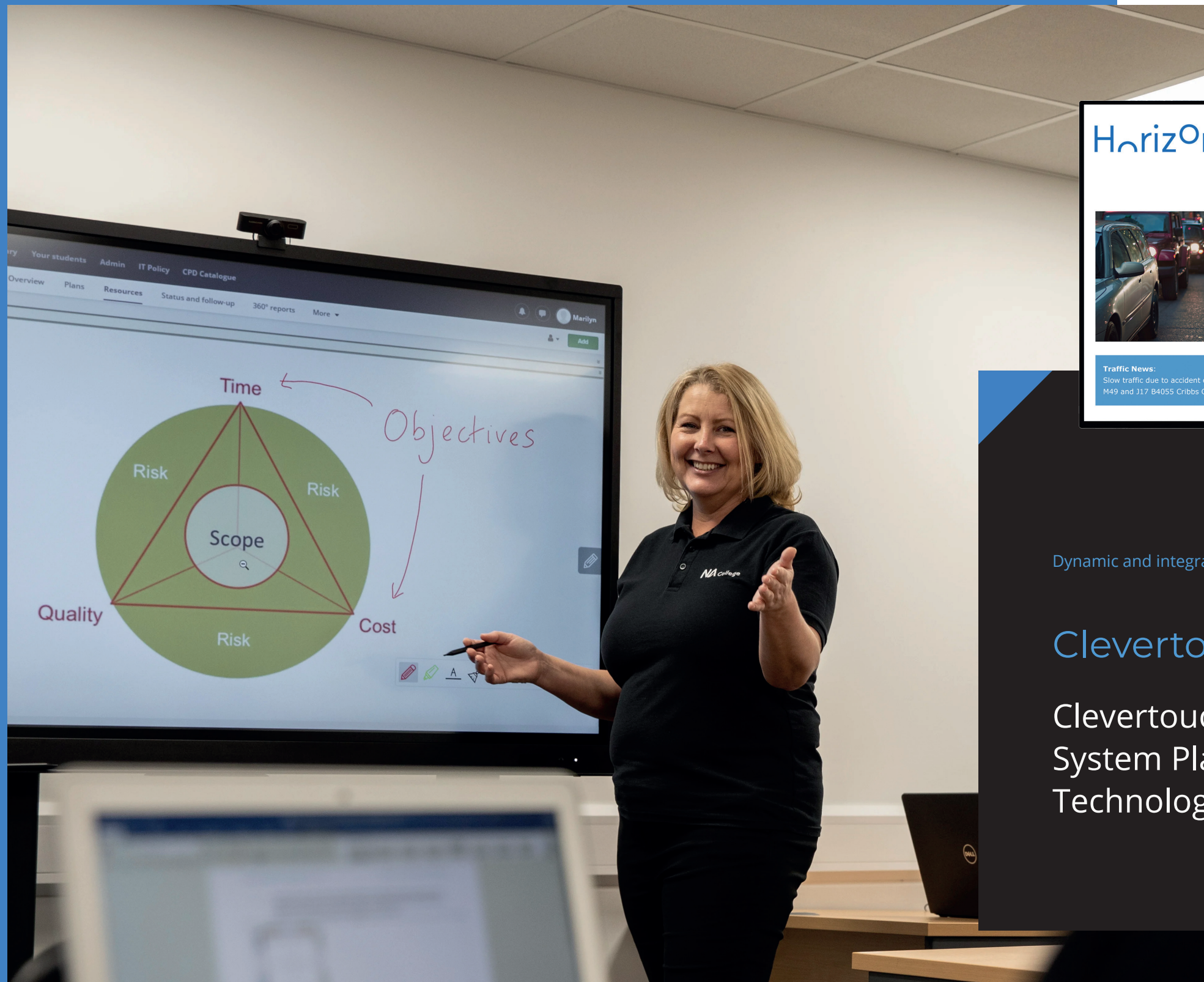
Personalise your launcher page

- Group by building, room, user type and more - it's totally flexible
- Add your own apps via apk file or choose from our range of included apps
- Lockdown settings so users have to stay within your guidelines
- Add your logo, colours and background images
- Custom clocks

It's simple!

- 1 Go to ClevertouchLive
- 2 Sync your UX Pro screen
- 3 Choose your UI layout





Dynamic and integrated

ClevertouchLive

ClevertouchLive is the Content Management System Platform (CMSP) for all Clevertouch Technologies innovations.

Create user or group profiles
 Log into any connected screen in your district and get your apps, home screen, settings and more.

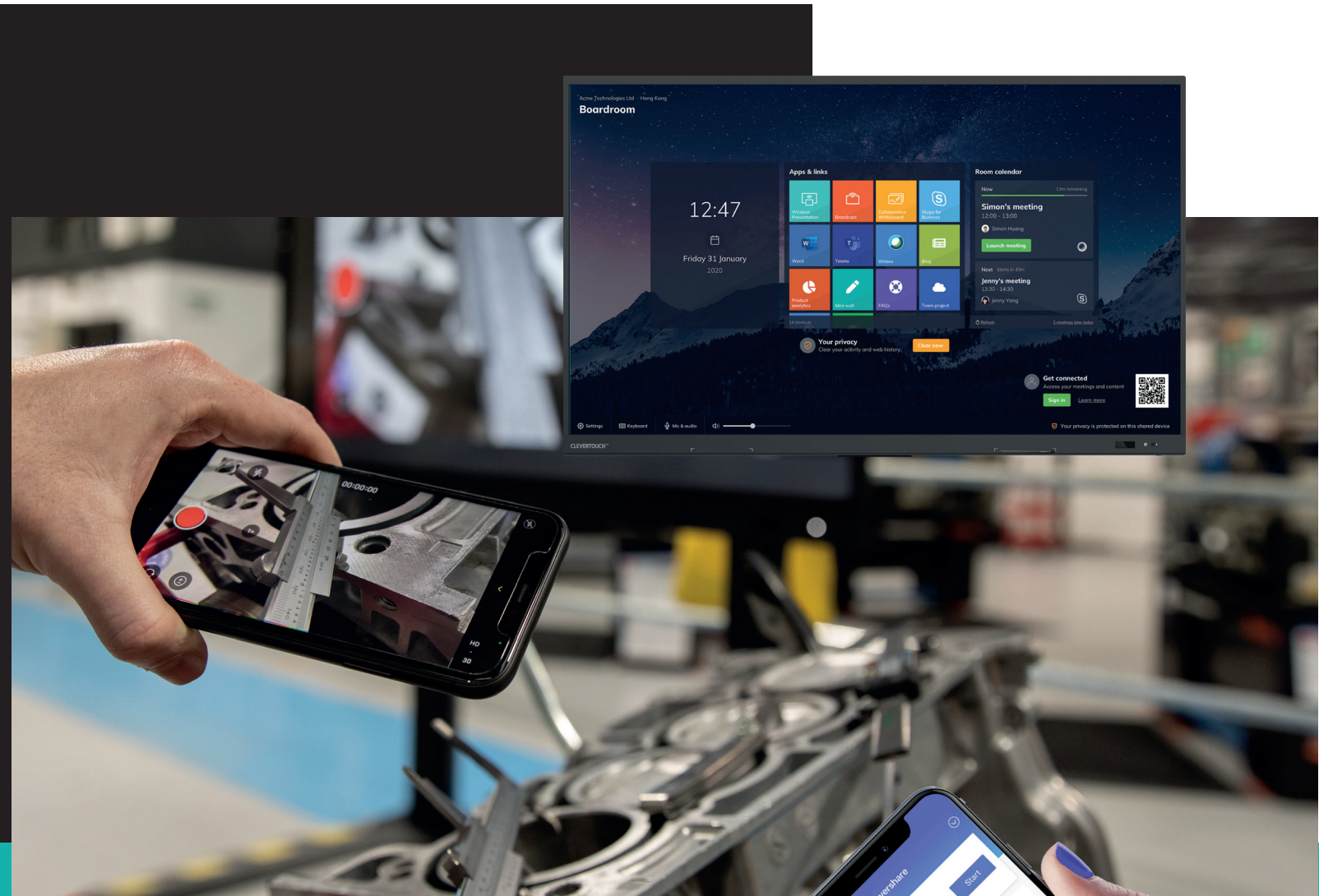
Personalise your launcher page

- Display digital signage messaging when it's not in use.
- Add apps from the Cleverstore or upload your own apk files – send to all your interactive displays without needing to manually install them on individual screens.
- Send alerts and announcements to your audience.
- Weather warnings, stranger alerts, fire alarms.
- Call staff/students to other locations.

Clevershare

Collaborate with ease - connect up to 50 devices, including phones, tablets and laptops. Screen mirror with images, video and audio.

With touch-back for two-way control, the presenter has full control over what is shared and can show 6 screens simultaneously, increasing collaboration and participation within every session.



Share content with any device

Up to 50 devices can connect with the Clevertouch screen and share content – images, video, and audio. Now with touch-back for two-way control.

The presenter has full control over what is shared and can show up to 6 device screens simultaneously, increasing collaboration and participation within every session.

Mastering Mode

This optional mode will allow you to manually accept or reject from the Clevertouch screen when someone attempts to connect via Clevershare.

Chromecast and Airplay

There is an optional button you can swipe in the settings that will allow you to natively connect your device this way.

Clevershare App

Any device can download the Clevershare App and connect instantly by typing in the code on the Clevertouch screen. Clevershare App is free to download and compatible with Android, Windows, iOS, and Chrome devices.

Clevershare Dongle (optional extra)

Use the USB-C Clevershare dongle to share content. No need to download any app or driver, so ideal for companies that do not allow downloads to devices.

How to connect

You can connect via the Clevershare App if your device is on the same Network as the Clevertouch. Use Advanced Mode for additional encryption and dual sub-networks. There is a Hotspot option if you are unable to use the network.



Optional Extra



Clevershare Dongle

- USB-C connection
- Compatible with UX Pro
- Works in conjunction with the Clevershare App

Clevershare App

- Works on any device
- Free to download
- Compatible with Android, Windows, iOS & Chrome Devices

With AirServer you can mirror content from your personal device to the Clevertouch panel without needing to download an app.

Key Features

AirPlay

Used by macOS, iOS and iPadOS devices.

AirServer has support for AirPlay mirroring, media as well as audio-only streams.

Bluetooth discovery.

Support for PIN, password, and on-screen prompt for incoming connections.



Google Cast

Used by Android and Chrome OS devices and is included in Chrome and Edge browsers.

AirServer has support for both Google Cast mirroring and media (casting from apps).

Casting from apps is also available from iOS and iPadOS. DRM protected content is supported if the host device has DRM support.

Google Cast has no PIN support, but AirServer has a prompt option to accept connections.



Miracast

Used by Windows 10 devices as well as some Android devices (Samsung, LG, Huawei and more).

AirServer has support for UIBC (touchback) and hardware cursor that transmits the mouse cursor separately to reduce perceived latency.

Support for PIN code and on-screen prompt for incoming connections.



Whiteboarding made easy with a huge selection of pen & art tools to choose from

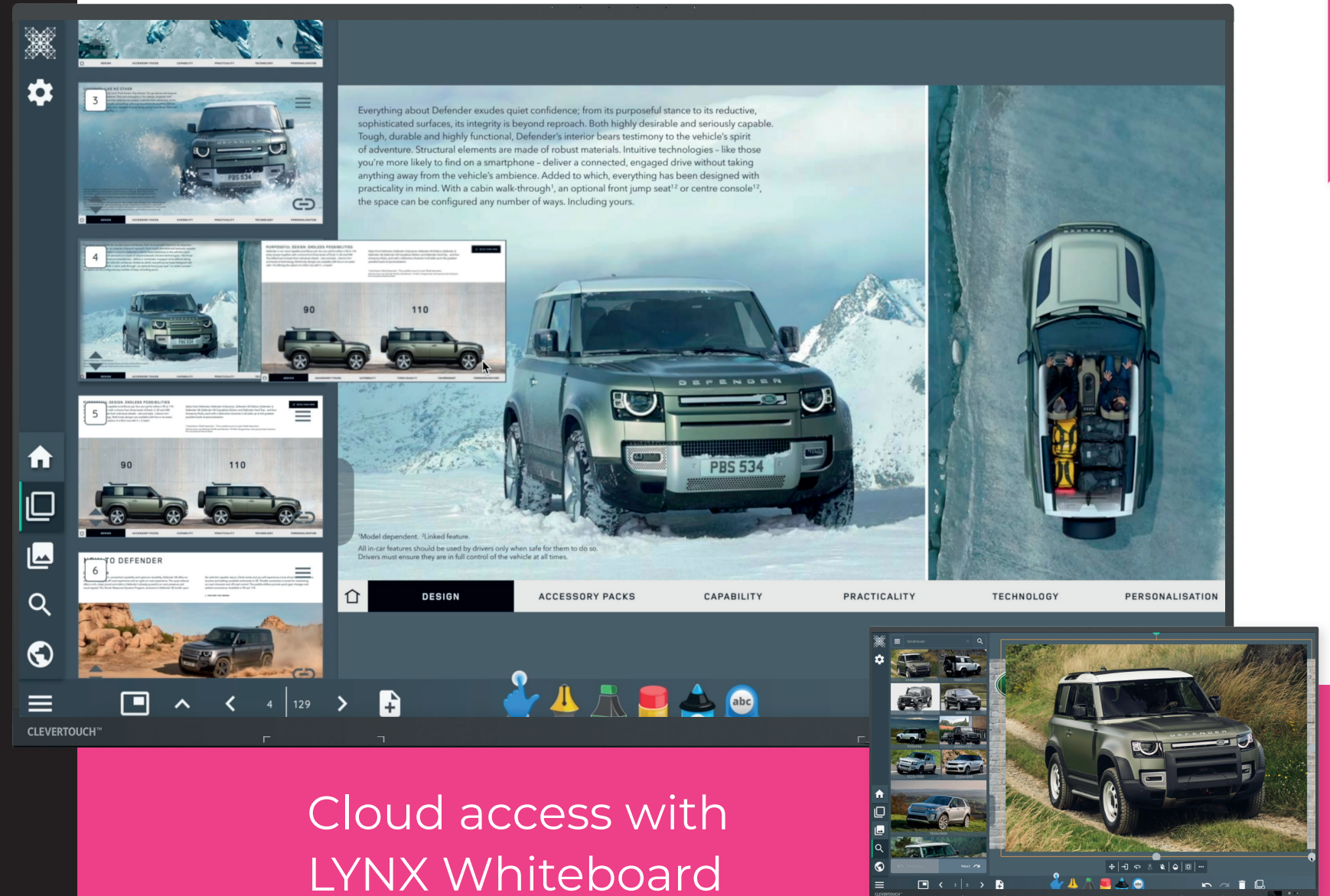
LYNX Whiteboard

Change the way you present. With LYNX Whiteboard, the possibilities are endless. More than just a whiteboard app, LYNX Whiteboard has been designed for touchscreens and has an extremely relatable user interface.

It's much simpler to create touch-based presentations in LYNX Whiteboard, but you can still import files from apps such as PowerPoint or PDFs if you need to use older resources that you've created.

You can import any type of media into your presentation and it will play within the presentation – you won't need to go to a new window to view webpages, videos or images.

You can even split your screen so that your web browser is viewable alongside your presentation.



Cloud access with LYNX Whiteboard

Access the cloud & Log in from anywhere

LYNX Whiteboard is available to use ad-hock without login, for impromptu whiteboard + the option of logging in to access Cloud drives.

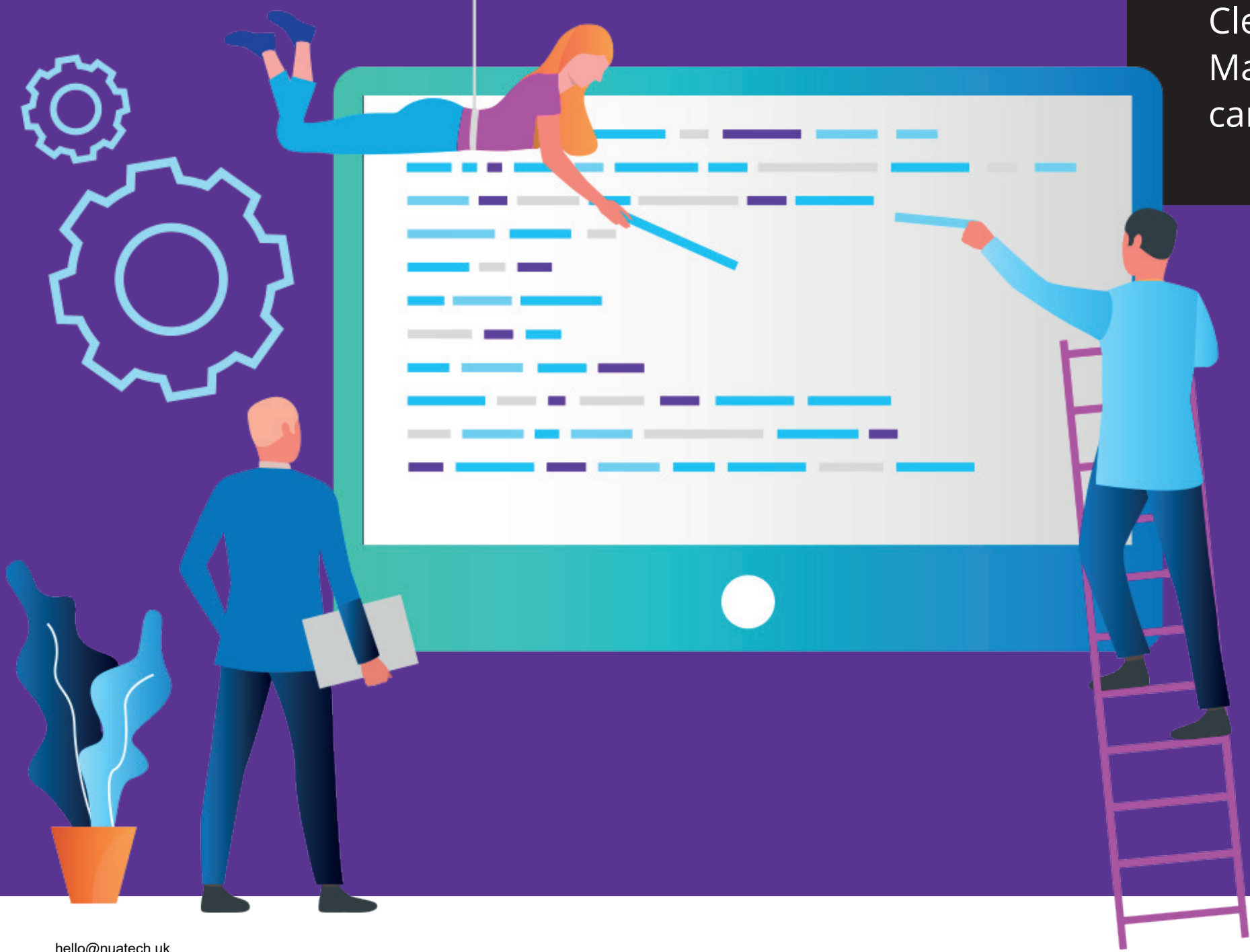
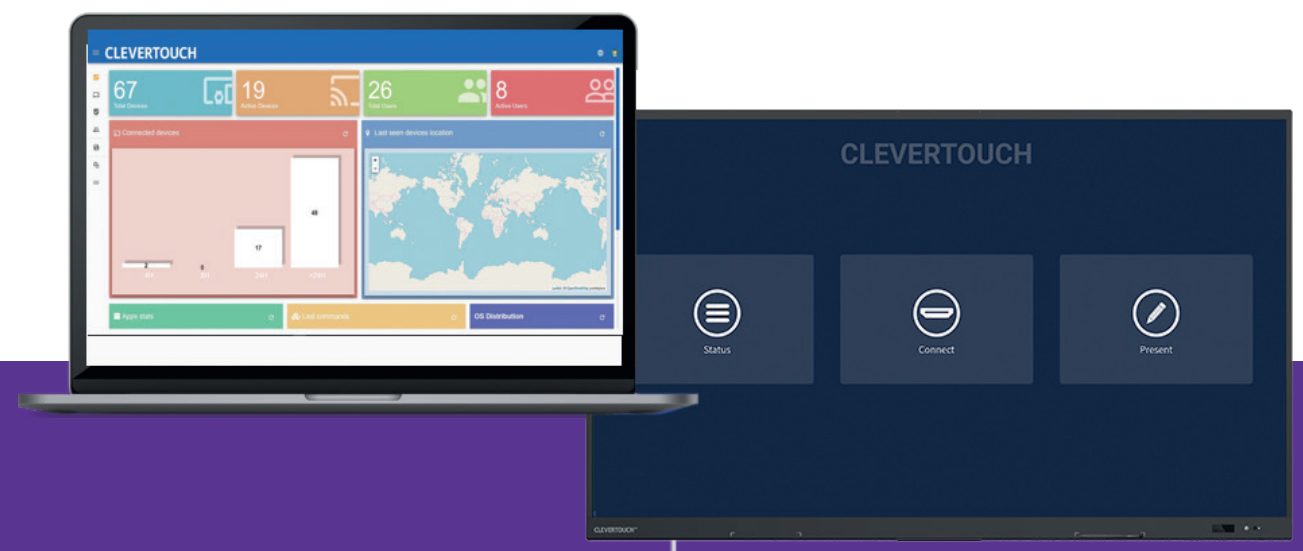
Download & Upload

Alternatively log into any Clevertouch and download your LYNX files.

Sync with other cloud-based drives

Get content from Dropbox, OneDrive, LYNX Cloud, or Google Drive and input it directly into your lessons.





Take Control

Remote Management

IT departments & administrators can take control, without needing to leave their office. Control multiple Clevertouch devices by linking your entire fleet of Clevertouch screens to your Remote Management MDM account, so that you can control them from anywhere.

Update or remove apps

With the functionality to add .apk files to some or all of your Clevertouch displays, your organisation can always have the latest apps available to use.

Over-The-Air updates

Our OTA updates are just one click away to get the latest firmware on your screen. We will never charge you for firmware updates.

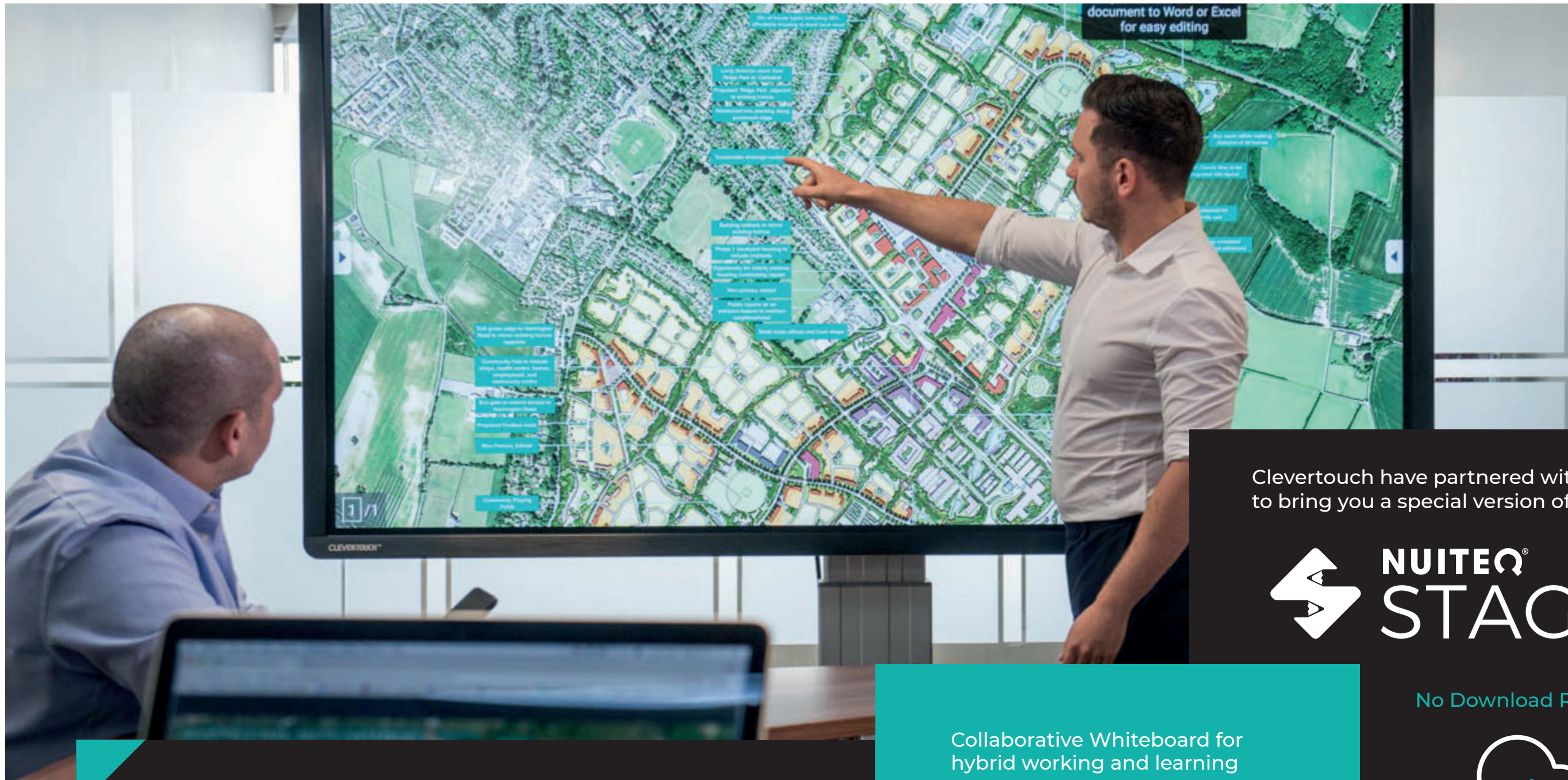
View status information

IT managers can troubleshoot without needing to leave their office. Look up individual Clevertouch screens, view the display in realtime, edit settings, or restart devices remotely.

Group and tag

If you have a group of screens being used by a certain department, you can deploy the same apps and settings, so that there is a standardised experience for everyone in that department.





Stage Lite

Stage Lite is a hassle-free unified communications solution designed for both on-site and distributed teams. Its clean interface and intuitive functionalities constitute a tool that makes collaboration easy and work more efficient.

Clevertouch have partnered with NUITEQ to bring you a special version of STAGE.

- Collaborative Whiteboard for hybrid working and learning**
Work together in real-time to annotate documents and create whiteboards.
- Chat**
There's an inbuilt text-chat feature.
- Import Lessons**
You can import lessons from Snowflake and work on them together
- Browser Based**
Anyone can join, as long as they have the meeting code - there's no need to download any software

No Download Required!

Get started today in 3 simple steps:

- 1 Visit [Stg.Live](#)
- 2 Enter your code
- 3 Start Collaborating

Our UX Pro screens are simply Multi-Award Winning

Why Choose Clevertouch Technologies?

- ✓ Trusted Brand
- ✓ No ongoing cost
- ✓ Free training
- ✓ Part of a Digital Ecosystem of products – control them all from one online platform
- ✓ Dedicated Support Team
- ✓ Free updates and new features
- ✓ Start a video conference call with the touch of a button
- ✓ Bring interactivity to life by allowing real life mark up of documents
- ✓ Cut down on print costs by easily emailing or sharing meeting content with participants
- ✓ Stay green with a technology that auto turns on and off
- ✓ Keep your team informed using ClevertouchLive signage, updatable with a single touch
- ✓ High user adoption due to ease of use



AV Manufacturer of the Year
2020 – Winner



AVTechnology Europe Best of Show Award at ISE
2020 – Winner



Best in Show
2020 – Winner



InfoComm Best in Show – AV Technology
Clevertouch
2020 – Winner



InfoComm Best in Show – Tech & Learning
2020 – Winner



Interactive Display Technology of the Year
Clevertouch
2019 – Winner



Technology Business of the Year
Plus X Award
2019 – Winner

Display

Diagonal Size	55" 4K, 65" 4K, 75" 4K, 86" 4K
Screen Type	TFT LCD - Direct LED Backlight
Aspect Ratio	16:9
Display Colours	1.07 Billion (10bit)
Resolution	4K UHD (3840 x 2160)
Response Time	5ms
Refresh Rate	60Hz
LCD Viewing Angle	178°
Brightness	420 cd/m2
Contrast Ratio	55" 4500:1
	65" 4500:1
	76" 4500:1
	86" 4500:1
Dynamic Contrast Ratio	55" 5000:1
	65" 5000:1
	75" 5000:1
	86" 5000:1
Glass Hardness	AG Tempered Glass - Mohs Level 7
NEW Glass Type	Low Parallax Zero Bonding - Heat tempered - Anti Glare - Super Glide Surface
NEW Main Board	9950 MTK (MStar)
Life of Screen	50,000 hours

Interactivity

Writing Technology	High Precision IR Technolgy
Continuous Touch Points	20
Touch Resolution	32768x32768
Response Time	≤5ms
NEW Touch Accuracy	1mm
Minimum Object Size	3mm
Touch Tool	Finger, Gesture, Passive Infrared pen
Simultaneous Writing	Yes
Ink In Tools	Yes - LYNX
Pens Included	2
Pen Type	Dual Recognition Stylus
Pen Holder	Integrated Full-length Pen Tray
Pen Tip Diameter	3mm/7mm
Pen & Touch Differentiation	Yes
Pen Identities	2
Palm Rejection	Yes
Annotation Over Any Source	Yes
Classroom Essential Apps	Includes Whiteboard, Annotate, Timer, Media Players, Browser, PDF Reader, Screen Record, Spinner, Voting, Maths Tools
Compatibility	Windows 10, Linux, Mac, Android, Chrome
Tracking Rate	6m/s
Scan Rate	200Hz
Gestures & Edge Swipes	Windows Supported, OSX with additional Driver

Connectivity

OPS Slot	1 - Intel® spec 80Pin
HDMI In	3
HDMI Out	1
USB-A 2.0	1 (1 USB for system upgrade)
USB Touch (type B)	2
NEW USB A 3.0 (Faster Data Transfer)	4
NEW USB C	1x USB-C with video, audio, touch, power and hardware optimisation and ethernet – front-mounted (Supports 65W Charging) (Supports 65W Charging) 1x USB-C with video, audio, touch and hardware optimisation – side-mounted
LAN In (RJ45)	1
NEW LAN Out (RJ45)	1
RS-232	Yes
Wake-on-Lan	Yes
NEW Wireless Adapter 2.0 + WAP	Upgraded
NEW Bluetooth	Yes – 5.0
VGA In	1
Audio In	1 (3.5mm)
Optical Out	1 (Coax)
Headphone	1 (3.5mm)
Total touch out ports	2
NFC Reader / Writer	Optional Extra
Camera	Optional Extra
Proximity Sensor	Yes
WiFi	IEEE 802.11 a/b/g/n/ac with 2 x 2 MIMO (hotspot only) (both 2.4 and 5 GHz bands)
WiFi Speed	Capable of speeds up to 433Mbps

Computing

NEW Operating System	Android 9
NEW System Version	LUX 9
NEW RAM	6GB
NEW Internal Storage	64GB
NEW CPU	Quad Core A73
NEW GPU	Mali G52MC2
Android Resolution	4K
Integrated LUX UI	Yes

Audio

Dual Front-Facing, Bass Enhanced Speakers	2 x 15 Watt Speakers + 15 Watt Subwoofer
Audio Out	Yes
SPDIF / Fibre	Yes
Sound Channel	2.1
NEW Line Array Microphone 6 (noise cancelling)	Yes – Omni-directional up to 8 meters
Super Wide Sound	Yes

Power

Power Requirements	100 - 240 ~ 50/60Hz 3.5A
Power Consumption (Normal)	55" 102W
	65" 117W
	75" 145W
	86" 168W
Power Consumption (Standby)	< 0.5 Watts
Ultra Quiet Fanless Design	Yes

Operating & Storage Environment

Operating Temperature	0° to 40°
Storage Temperature	-20° to 60°
Operating Humidity	10% to 90% RH
Storage Humidity	10% to 90% RH
Altitude	Below 5000 metres

Physical Specifications

Panel Dimensions	55" 1262x794x89mm
	65" 1488x920x90mm
	75" 1709x1043x89mm
	86" 1957x1182x86mm
Packed Dimensions	55" 1428x220x902mm
	65" 1628x208x1024mm
	75" 1860x280x1163mm
	86" 2112x280x1304mm
Net Weight	55" 27.7Kg
	65" 37.3Kg
	75" 51.1Kg
	86" 63.8Kg
Packed Weight	55" 33.9Kg
	65" 45.7Kg
	75" 63.9Kg
	86" 78.9Kg
VESA Mount Point	55" 400x200mm
	65" 400x200mm
	75" 800x400mm
	86" 800x600mm

Warranty

Warranty term and upgrade options vary by region. Contact your local reseller or distributor for information and visit clevertouch.com/about/warranty

Compliance & Certification

Regulatory Certification CE, FCC, UL, Energy Star & EEC



UX Pro Built-in Features

LYNX™ App With Online Lesson Planning	Yes
Embedded Digital Signage	Yes
Clevershare™ Mirroring Any Device To The Board	Free for the life of the screen (touch back)
Integrated Personalised Accounts Profiles	Yes
Cloud Account Access	OneDrive Google Drive
Embedded Room Booking	Yes
Whiteboard Annotation	Yes
Email Out Direct From Touchscreen	Yes
Scan QR Code For Saving Work	Yes
CleverMessage™ – Instant Alert Messaging	Yes
Over-the-Air Updates	Yes
Remote Management Of Touchscreens (MDM)	Yes - Five year license

Packed Contents - Inside your Clevertouch Box

What's In The Box	(1) Clevertouch UX Pro (1) 1.5M Length HDMI Cable (1) 3M Length USB cable (A-B) (2) 1.5M USB Cable (1) 3M Regional Power Cable (1) 5M 3.5mm Audio Cable (1) Remote Control (2) Batteries for Remote Control (2) Dual Recognition Stylus (1) User Guide (1) Quick Install Guide (1) Wireless Adapter 2.0 + WAP
-------------------	--

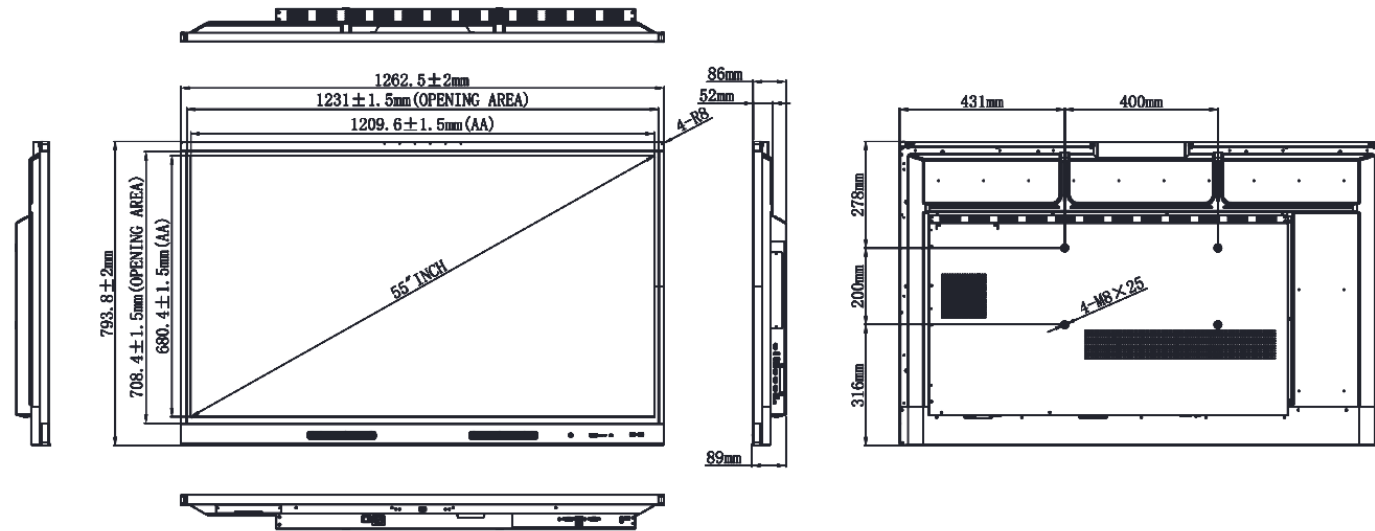
Installation

The installation of this product should be completed by a qualified installer. Use of components not supplied by Clevertouch or not meeting minimum specifications may impact performance, safety and warranty. For more information, visit clevertouch.com

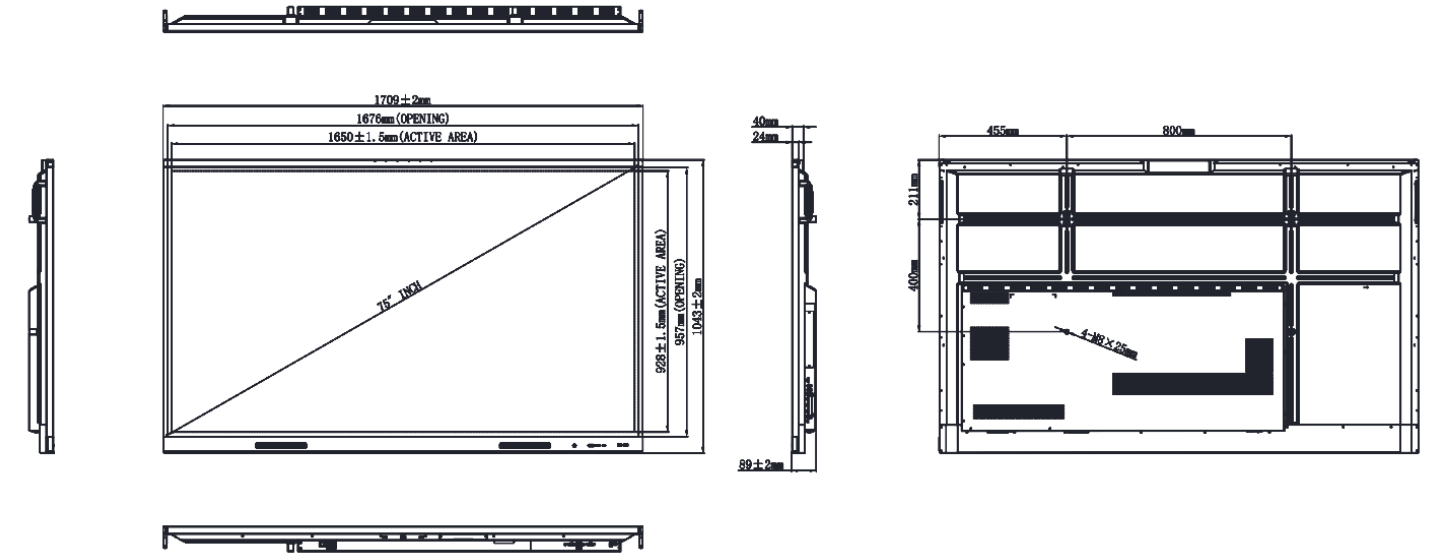
Support

For all Clevertouch products, visit: support.clevertouch.com

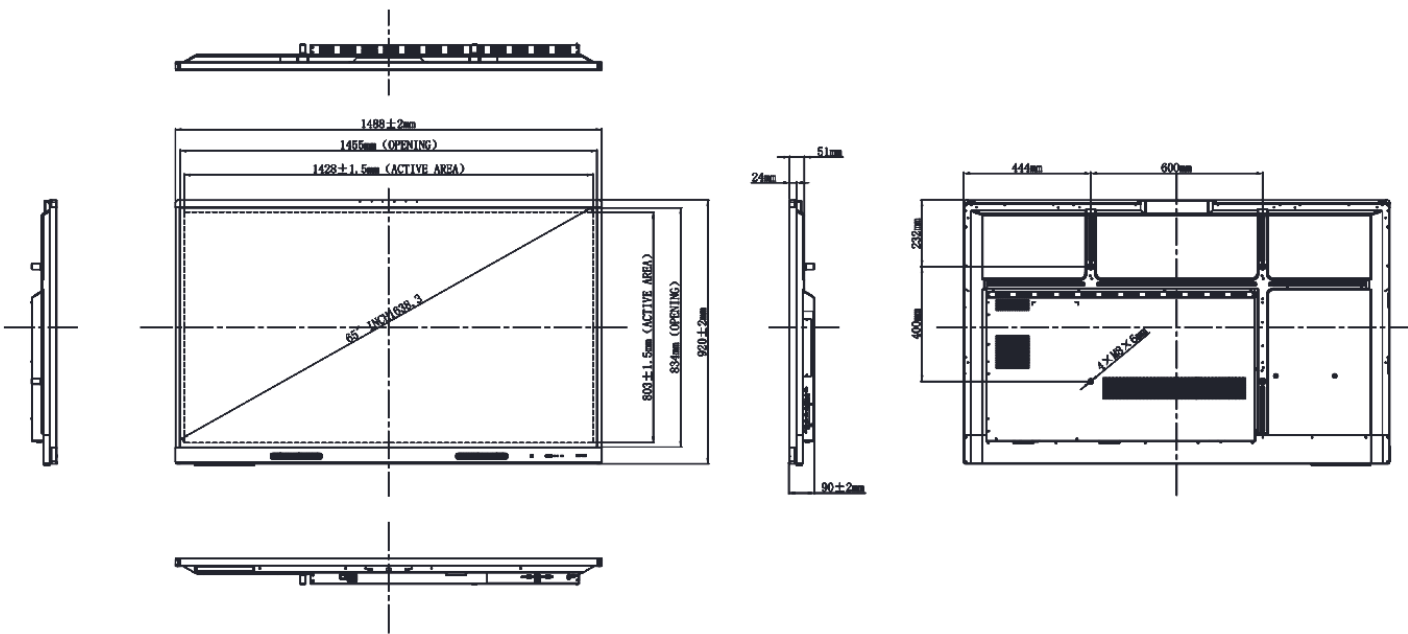
55"



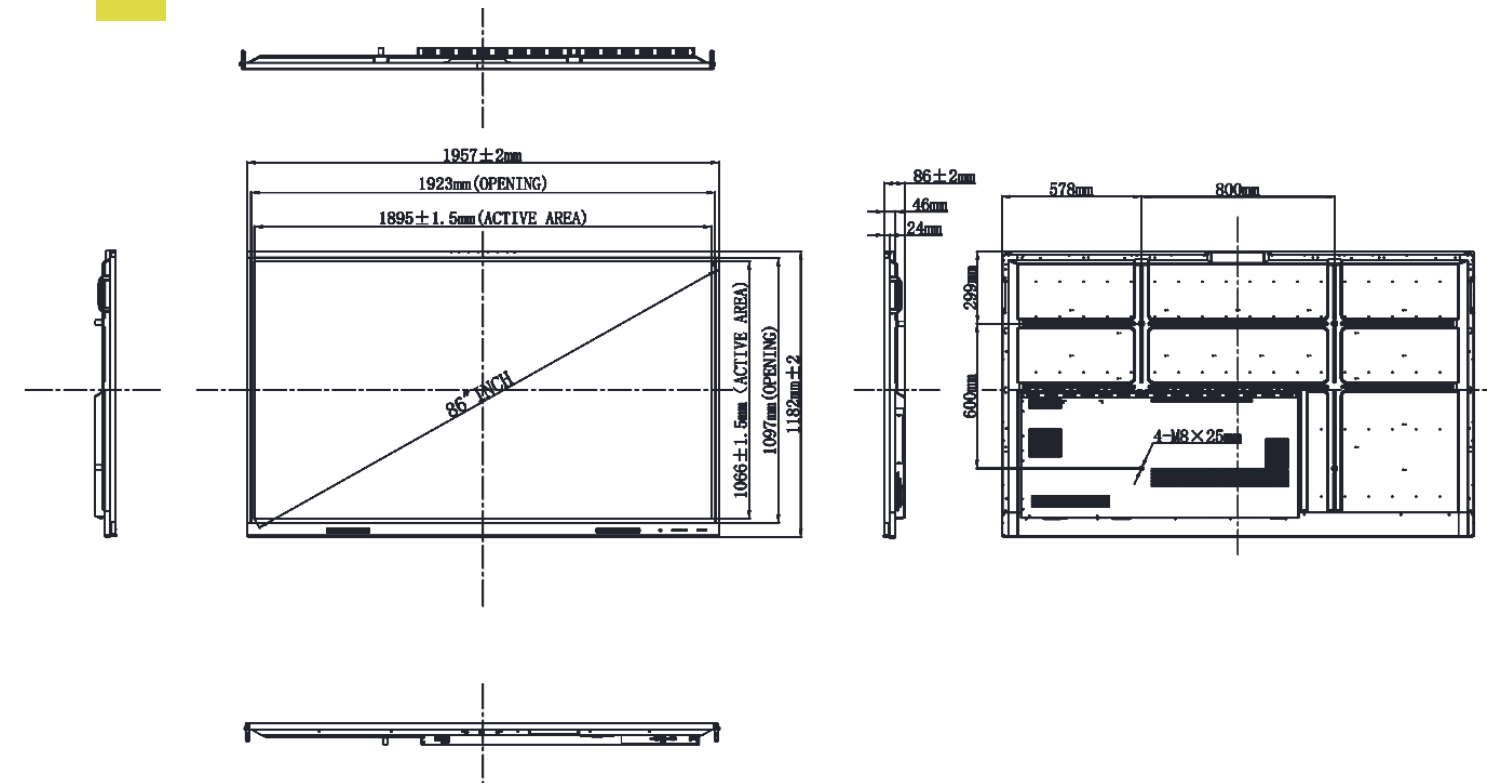
75"



65"



86"



Digital Ecosystem

A unique digital solution for every space which redefines the way to distribute information and collaborate using technology.

DIGITAL ECOSYSTEM

Reception Foyer Digital Signage
Engagement Messaging

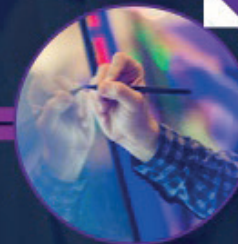


Way-finding
Directional Screen
Branding

Commercial Displays
Inform / Educate / Promote



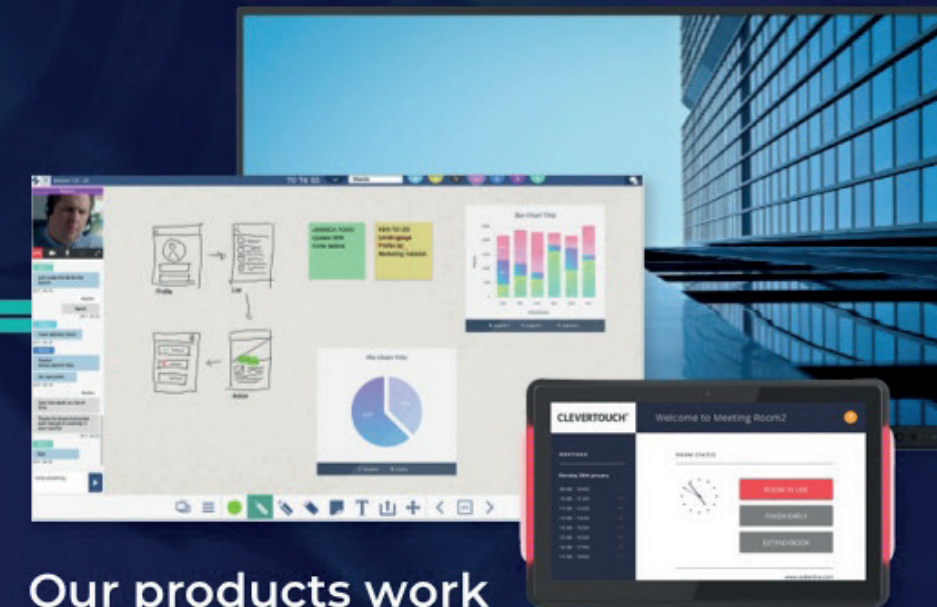
Infinity Whiteboard
Create documents anywhere, with LYNX Whiteboard



Room Booking
Centralised Room Booking Panels



One-touch updates
Control what's on the screen from your mobile device



Our products work together to help your business function smarter!

QR Codes
Enhance your audience experience with interactive QR Codes in presentations.



Screen Mirroring
With Clevershare connect with any device, on any network. Includes touchback for two-way mirroring.



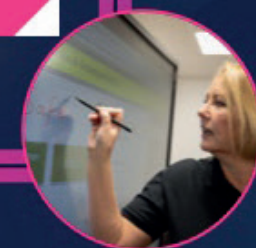
Remote Management
Allow your IT department to remotely take control and troubleshoot or make updates.



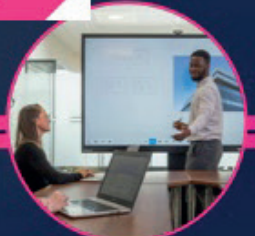
Unified Communications
Collaborate via video and real-time whiteboard with Zoom and Teams with one-touch launch of your preferred UC platform



Interactive Collaborative Displays



Cloud Accounts
Integrate with Google Workspace or Microsoft 365



CLEVERTOUCH[®]
TECHNOLOGIES

nuatech



Contact us for
more details

hello@nuatech.uk